



ACCESS CONTROL

CAFETERIA
MANAGEMENT

TIME-ATTENDANCE

COSEC DOOR FMX

Premium Door Controller with Multispectral Fingerprint Reader

JOB PROCESSING
AND COSTING

VEHICLE ACCESS MANAGEMENT



VISITOR MANAGEMENT

CONTRACT WORKERS
MANAGEMENT

GENERAL

Credential Support	Fingerprint, RFID Card and PIN
Display	4.2" Capacitive Touchscreen

CAPACITY

Max. User Capacity	1000 (1:N) and 50,000 (1:1)
Template Capacity	1000 (1:N) and 100,000 (1:1)
Cards Per User	Up to 2
Types of Cards Support	EM Prox, HID Prox, HID iCLASS and Mifare (COSEC CPM Module Required)
Event Buffer	5,00,000

COMMUNICATION

Ethernet	Yes (10/100 Mbps)
PoE	Yes (IEEE 802.3 af)
Wi-Fi	Yes (802.11 b/g/n)
Mobile Broadband	Yes (External Dongle through USB Port)

INTERFACES

Exit Switch	Yes
Door Status Sense	Programmable NO, NC, Supervised
Door Lock Relay	Form C, SPDT Relay (Max 2A@30 VDC)
Door Lock Power	12VDC @ 1A (For Adaptor Supply Mode) 12VDC @ 0.5A (For PoE Supply Mode)
Aux-In	Programmable NO, NC, Supervised
Aux-Out	Form C, SPDT Relay (Max 2A@30 VDC)
Reader Interface Types	RS-232 and Wiegand In Only
USB	2 (1 for Data Transfer and 1 for Broadband Dongle)

CONFIGURATION

CPU	800 MHz ARM Cortex A8 based Processor
Flash Memory	256 MB Flash
RAM Memory	512 MB DDR3 RAM
Micro SD Card	Yes (Inbuilt 4 GB)

ELECTRICAL

Input Power	12 VDC @ 2A
Battery Backup	No Internal Battery Backup, External through PSBB

PHYSICAL

Dimensions (WxHxD)	100 x 220 x 56 mm ³ (3.9" x 8.7" x 2.2")
Weight	0.6 Kg (1.32 lbs)

ENVIRONMENTAL

Humidity	5% to 85% RH Non-Condensing
Operating Temperature	0°C to +50°C (32°F to 122°F)

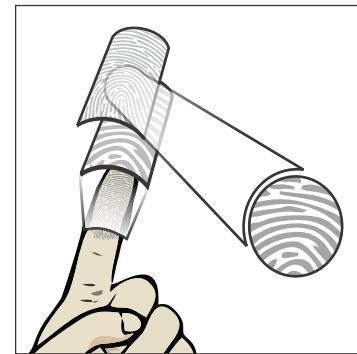
OTHERS

System Integration	Device API for Software Integration
Operational Mode	Direct Door with COSEC CENTRA Server
Software Compatibility	COSEC CENTRA V10R3 Onwards
Tamper Detection	Yes

SENSOR SPECIFICATIONS

Sensor Technology	Multispectral Lumidigm Sensor with Live Fingerprint Detection
Sensing Area	27 x 30 x 41 mm ³
Image Size in Pixels	500 dpi
Image Capturing Area	17.4 x 13.9 mm ²
IP Standard	IP65 Sensor
Finger Detection to Image	0.8 sec
Finger Placement to Identification	2.0 sec

- Sensor Reads Surface as well as Subsurface of a Finger
- Fast and Intuitive User Identification with Live Fingerprint Detection



ABOUT MATRIX

Established in 1991, Matrix is a leader in Telecom and Security solutions for modern businesses and enterprises. An innovative, technology driven and customer focused organization; Matrix is committed to keep pace with the revolutions in the telecom and security industries. With more than 40% of its human resources dedicated to the development of new products, Matrix has launched cutting-edge products like Video Surveillance solutions, Access Control, Time-Attendance, IP-PBX, Universal Gateways, Terminals, Convergence solution, VoIP Gateways and GSM Gateways. These solutions are feature-rich, reliable and conform to the international standards. Having global foot-prints in Asia, Europe, North America, South America and Africa through an extensive network of more than 500 channel partners, Matrix ensures that the products serve the needs of its customers faster and longer. Matrix has gained trust and admiration of customers representing the entire spectrum of industries. Matrix has won many international awards for its innovative products.

For further information, please contact:



MATRIX COMSEC

Head Office

394-GIDC, Makarpura, Vadodara-390 010, India.
Ph: +91 265 2630555,
E-mail: Inquiry@MatrixComSec.com
SMS 'MATRIX' to +91 99987 55555

Manufacturing Unit

19-GIDC, Waghodia, Dist. Vadodara-391 760, India.
Ph: +91 2668 263172/73

www.MatrixSecuSol.com